

Software Manual Product: 8053 900 001
XELSIUS Control 2.0 - Labmode

Manufacturer

nevoLAB GmbH
Am Gehrenbach 8
D 88167 Maierhöfen
www.nevolab.de

Fon:
+49 8383 9929 566 0



XELSIUS Control 2.0

User Manual Software

Version	Date	Subject	Abr.
1.0	29.04.2020	Review & Release	MJ
0.1	19.11.2019	Draft Initial ENG	ML

<i>Content</i>	2
A Preface	3
<i>Symbols</i>	3
B General Information	4
<i>Adress</i>	4
<i>Documentation</i>	4
<i>Intented Use</i>	4
<i>User</i>	4
C Screens Labmode	5
<i>Labmode startscreen</i>	5
<i>Parameter Input overview</i>	7
<i>Parameter Input Temperature</i>	8
<i>Parameter Input Ramps</i>	9
<i>Parameter Input Stirrer</i>	10
<i>Parameter Input Timer</i>	11
<i>Labmode Cell information</i>	12
D Error Messages	13
<i>Error Codes</i>	13
<i>Service adress</i>	13

Content

A Preface

This manual helps to commission and to operate the device safely and smoothly. The instructions must therefore be read carefully before use. Read this manual before using the equipment.

Please keep this manual accessible for all users at all times.

In these operating instructions, the following safety symbols are used. They are intended to alert the reader to the associated safety instructions in the text.



This symbol indicates risks to people, equipment, materials or the environment.

The documentation has been prepared with care. The product described is constantly evolving. Therefore, the documentation is not in every case checked for consistency with performance data, standards or other characteristics and is not a form of guarantee in legal aspects. If it contains technical or editorial errors, we reserve the right to make alterations at any time and without notice.

© This manual is copyrighted. Any reproduction or third party use of this publication, in whole or in part, is prohibited without written permission of the manufacturer.

Symbols

B General Information

Manufacturer	
Address	nevoLAB GmbH Am Gehrenbach 8 88167 Maierhöfen Germany www.nevolab.de info@nevolab.de +49 8383 929 566 0

Adress

Identification of the software:

Art Nr	8053 900 001	XELSIUS Control 2.0
	Version	2.29

Documentation

The software and its manual is part of the following products

Art Nr	8053 100 002	XELSIUS Synthesis Reactor
--------	--------------	---------------------------

The software is designed

- to control a XELSIUS Synthesis Reactor
- to control each Cell of the XELSIUS Synthesis Reactor individually

Intended Use

The software does not require a login

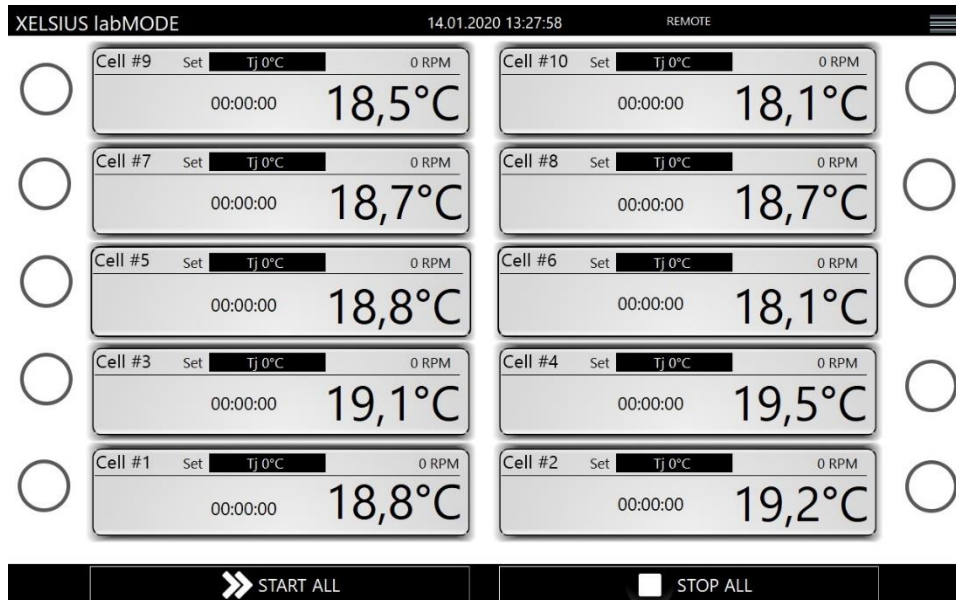
- Lab Mode no login, without password

User

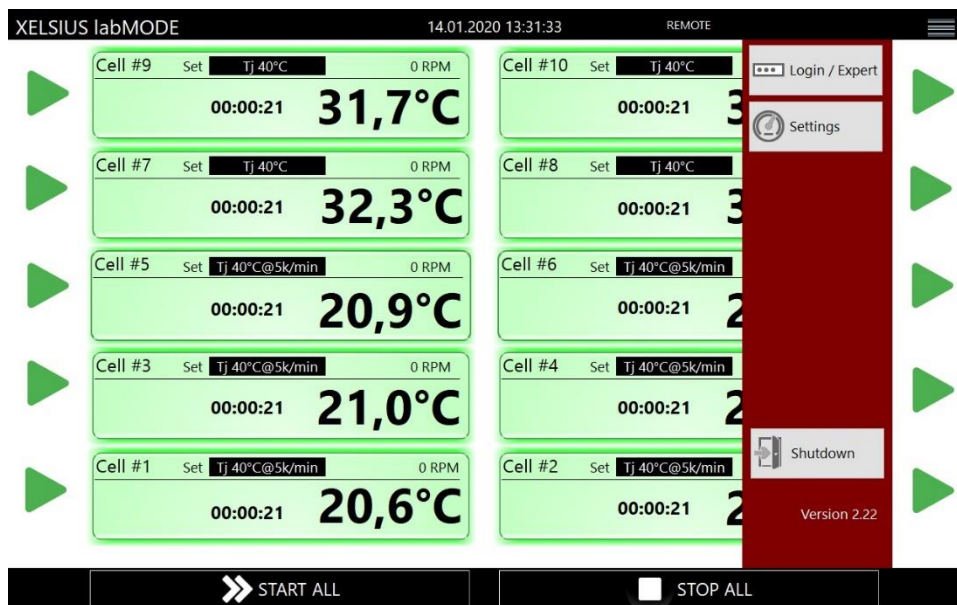
C Screens Labmode

This is the screen after booting the system

Labmode
startscreen



Klick on:	Action
CELL, gray area	Parameter Input Screen
Menu, right top of screen	Show / close the Menu (see next page)
START ALL	Stop all 10 cells
START ALL	Start all 10 cells according to parameter settings



Klick on:	Action
Menu, right top of screen	Show / close the Menu
Login / Expert	Switch to Promode. Make sure that no cell is active when switching between modes!
Shutdown	Shutdown the Software, back to desktop
Settings	Settings for Service.

Note:

For information about the Promode please read the Software manual 8053 900 001 XELSIUS Control 2.0 - Promode.

Promode can be startet by clicking the Promode-button on the desktop.

XELSIUS Parameter 14.01.2020 13:28:29

<input type="radio"/>	9	Tj	<input type="text" value="40"/>	°C	10	<input type="radio"/>
<input type="radio"/>	7	Ramp	<input type="text" value="0"/>	<input type="button" value="K/min"/>	8	<input type="radio"/>
<input type="radio"/>	5	Stirrer	<input type="text" value="0"/>	RPM	6	<input type="radio"/>
<input type="radio"/>	3	Timer	<input type="text" value="00:00:00"/>	hh:mm:ss	4	<input type="radio"/>
<input checked="" type="radio"/>	1				2	<input type="radio"/>

Parameter Input overview

Klick on:	Action
Circle #	Use Parameters for select reactor cell
CANCEL	Back to overview without changes
Numbers for Tj	Set Temperature for cell jacket
Numbers for RAMP	Set heating/cooling ramp
Unit for RAMP	Switch between K/min and K/h
Numbers for Stirrer	Set RPM for stirrer
Numbers for Timer	Set runtime. 00:00:00 means endless run

Note:

Swipe over the left circles or the right circles to select / deselect the whole side.

Swipe down = select side

Swipe up = deselect side

XELSIUS Parameter 14.01.2020 13:28:46

Temperature Tj °C

40

-1
-5
-10
-50

7 8 9
4 5 6
1 2 3
0 .

+1
+5
+10
+50

CANCEL +/- CLEAR OK

Parameter Input
Temperature

Klick on:	Action
CANCEL	Back to parameter Input without changes
OK	Back to parameter Input with changes
+/-	Switch nuber sign
CLEAR	Set temperature to 0 °C
Numpad	Edit temperature value
Buttons Right	Increase the temperature value
Buttons Left	Decrease the temperature value

XELSIUS Parameter 14.01.2020 13:29:07

Ramp K/time

0

7	8	9
4	5	6
1	2	3
0		

CANCEL
clear
OK

Parameter Input Ramps

Klick on:	Action
CANCEL	Back to parameter Input without changes
OK	Back to parameter Input with changes
CLEAR	Set ramp to 0, disabling ramp mode
Numpad	Edit ramp value

Note:

If the Ramp is set to 0 K/min or 0 K/h the cell will use maximum power.

XELSIUS Parameter 14.01.2020 13:29:23

Stirrer RPM

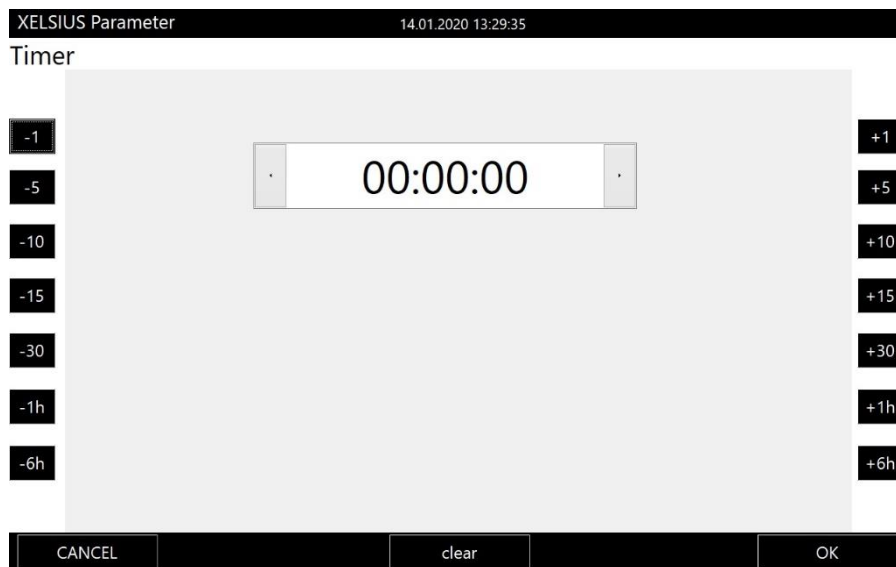
0

-1 -10 -25 -50 -100 -500 +1 +10 +25 +50 +100 +500

CANCEL CLEAR OK

Parameter Input Stirrer

Klick on:	Action
CANCEL	Back to parameter Input without changes
OK	Back to parameter Input with changes
CLEAR	Set stirrer to 0 RPM
Numpad	Edit stirrer value
Buttons Right	Increase the stirring speed
Buttons Left	Decrease the stirring speed

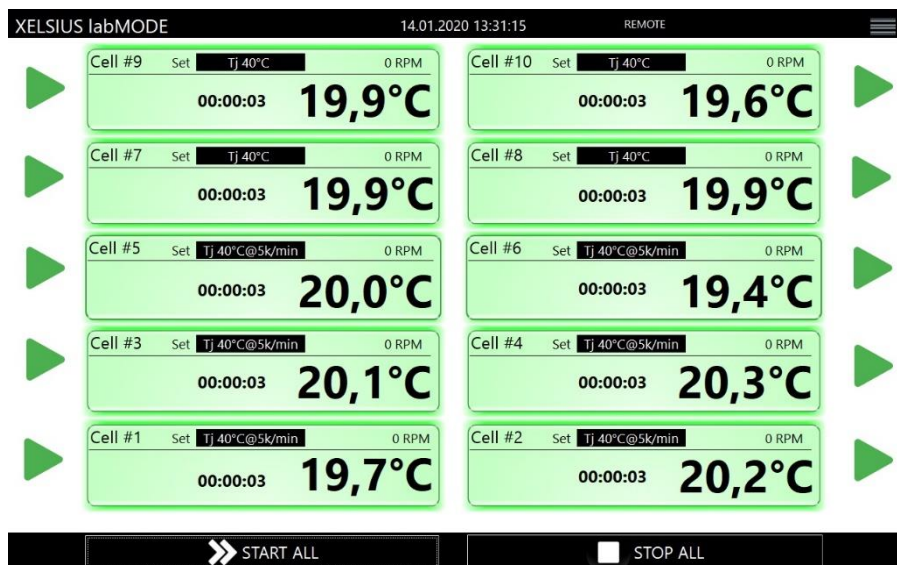


Parameter Input Timer

Klick on:	Action
CANCEL	Back to parameter Input without changes
OK	Back to parameter Input with changes
CLEAR	Set timer to 00:00:00
Buttons Right	Increase the stirring speed
Buttons Left	Decrease the stirring speed

Note:

A timer value of 00:00:00 will disable the timer, making the cell tempering till it is stopped manually.



Labmode
Cell information

Information	Meaning
Cell Color	Grey = cell disabled Green = cell aktive Red = Error
Big temperature value	Current jacket temperature
Timer value	If a timer was set, it is counting down to 00:00:00. If no timer was set, it ist counting up. Format: hours : minutes : seconds
Set-Field	Current Setpoint, Ramp and Stirrer speed

D Error Messages

Errorcode	Error handling
XELSIUS Reactor connection ERROR please check power and connection!	Conenction to Reactor is interrupted. Please check connections and restart the power supply unit.
E204	The cell temperature was 10 K higher than the target Temperature. Temperature supervision starts 5 minutes after a setpoint is startet. If this erroroccurs the cell will be disabled.

Error Codes

nevoLAB GmbH
Am Gehrenbach 8
D 88167 Maierhöfen
www.nevolab.de
Telefon: +49 8383 929 566 0
Telefax: +49 8383 929 566 30
Email: info@nevolab.de
service@nevolab.de

Service adress